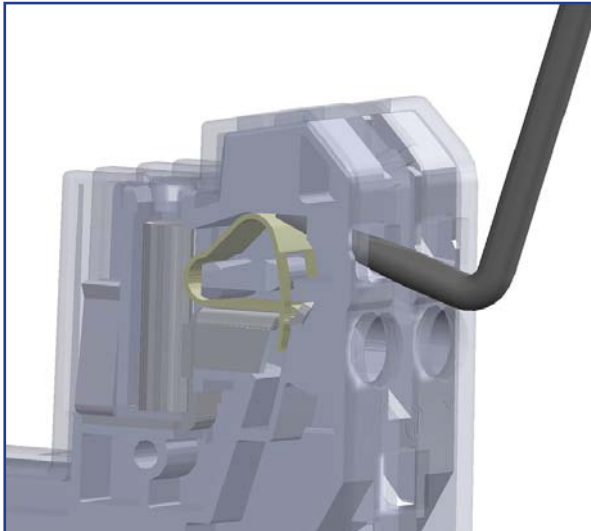
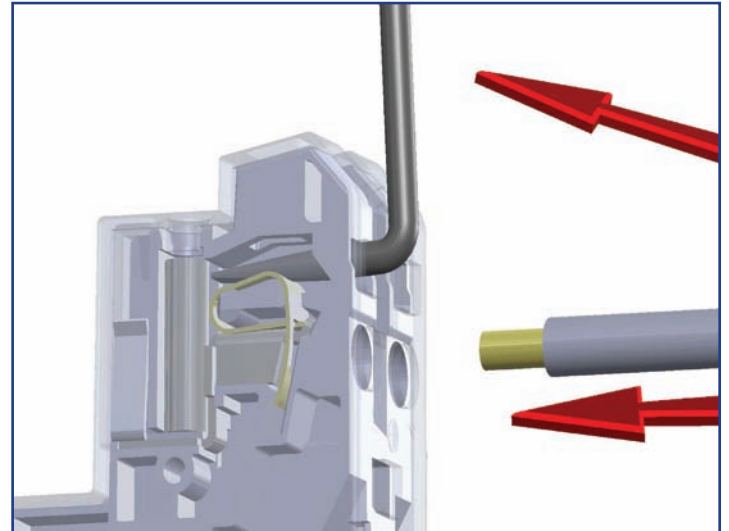


741014 – 90° Termination Module Installation Tool

The installation of Termination Modules is now much faster and easier with the aid of the new 90° Termination Module Tool. (Elsafe part number 741014) This tool is used in conjunction with CAGE CLAMP (a registered trade mark of WAGO) technology which is now incorporated into all Elsafe Termination Modules and enables simple installation



1 Insert the tool



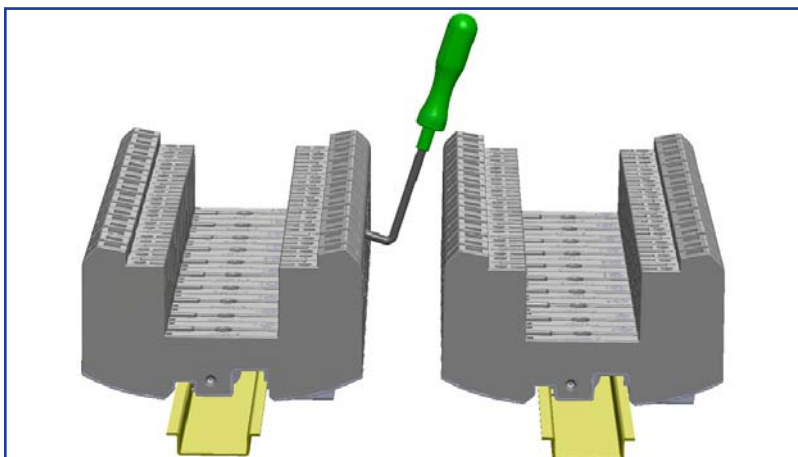
2 Pull the tool towards the direction of the termination module to open the clamp and insert the cable (as per the image above)

Please refer to the Elsafe termination module wiring instructions (document number 606600) for further installation instructions.

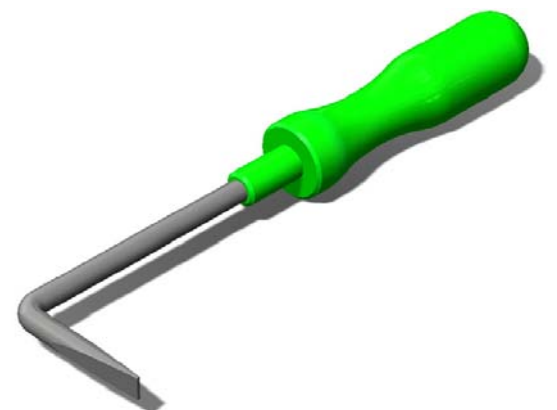
This new technology ensures that the redesigned Elsafe termination module is now

- Vibration proof
- Faster to install as no screwing of the terminals is required
- Maintenance free

Labour costs can further be reduced as there is no need to ferrule or pin the stripped wires before installation.



The Elsafe 90° tool also allows for banks of termination modules to be installed close together.



Version: 2012.06.28.



Elsafe Australia Pty Ltd

Sales Enquires

Tel: +61 (7) 3399 7099

Fax: +61 (7) 3399 9133

Email: railways@elsafe.com.au

Head Office

Tel: +61 (2) 9454 7500

Fax: +61 (2) 9454 7505

Email: railways@elsafe.com.au

service - quality - safety

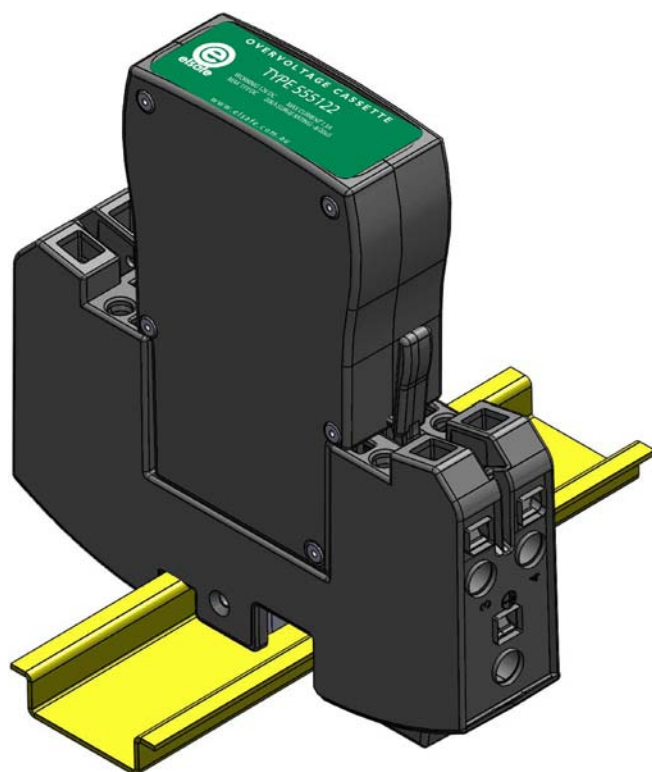
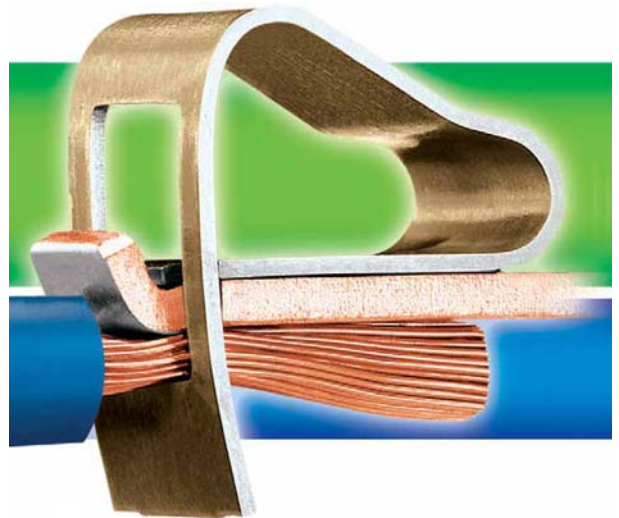
railways.elsafe.com.au

Vibration-proof-fast-maintenance-free!

The Elsafe termination module has been redesigned so that it now incorporates CAGE CLAMP Technology (a registered trade mark of WAGO)

The vibration-proof properties of CAGE CLAMP® connections were tested and verified in a vibration test to IEC/EN 60068-2-6. In this test, a variable frequency band up to 2000 Hz, at different accelerations up to 20 G and different amplitudes up to 20 mm, was passed in three axes. Extremely demanding test requirements for electrical installations in rolling stock (IEC/EN 61373) are prescribed by railway authorities or the testing agencies for marine approvals, such as GL, LR and DNV. These rigorous tests were also passed.

In the impact test to IEC/EN 60068-2-27 or for railway applications to IEC/EN 61373, the test samples were exposed to instant shock stresses, instead of permanent vibrations. Stresses up to 100G on the x, y, and z-axis were passed without any problems.



The maintenance-free feature results from the excellent long term consistency of the electrical and mechanical properties of the clamping connection – more accurately, the clamping point. The voltage drop test serves in the evaluation of the clamping point quality under stresses such as vibrations, temperature changes and corrosive influences, in order to verify the gastightness of the contact point. The CAGE CLAMP® technology has proven its long term consistency in laboratory tests by international approval authorities as well as in worldwide applications.

Version: 2012.06.28.

elsafe

1 Calder Point, Monckton Road Industrial Estate,
Wakefield, West Yorkshire, WF2 7AL
Tel: +44 (0) 1924 367255 Fax: +44 (0) 1924 290652
Email: sales@office-electrics.co.uk www.office-electrics.com

Elsafe, Unit 1, 9 Rodborough Road,
Frenchs Forest NSW 2086, Australia
Tel: +61 2 9454 7515 Fax: +61 2 9454 7505
Email: sales@elsafe.com.au www.elsafe.com.au

